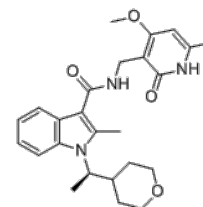


Product Name : CPI-360
Cat. No. : PC-21930
CAS No. : 1802175-06-9
Molecular Formula : C₂₅H₃₁N₃O₄
Molecular Weight : 437.54
Target : Histone Methyltransferase (HMTase)
Solubility : 10 mM in DMSO



CAS: 1802175-06-9

Biological Activity

CPI-360 is a potent, selective EZH2 inhibitor with IC₅₀ of 0.5 and 2.5 nM for wild-type EZH2 and Y641N mutant EZH2, respectively.

CPI-360 decreases cellular levels of H3K27me₃ and H3K27me₂ (EC₅₀, 56 and 65 nM, respectively), triggering cell cycle arrest and ultimately resulting in apoptosis in a large panel of non-Hodgkin's lymphoma (NHL) cell lines.

CPI-360 (200 mg/kg) reduced tumor growth of KARPAS-422 xenografts in mice.

References

Gehling VS, et al. Bioorg Med Chem Lett. 2015 Sep 1;25(17):3644-9.

Caution: Product has not been fully validated for medical applications. Lab Use Only!

E-mail: tech@probechem.com